

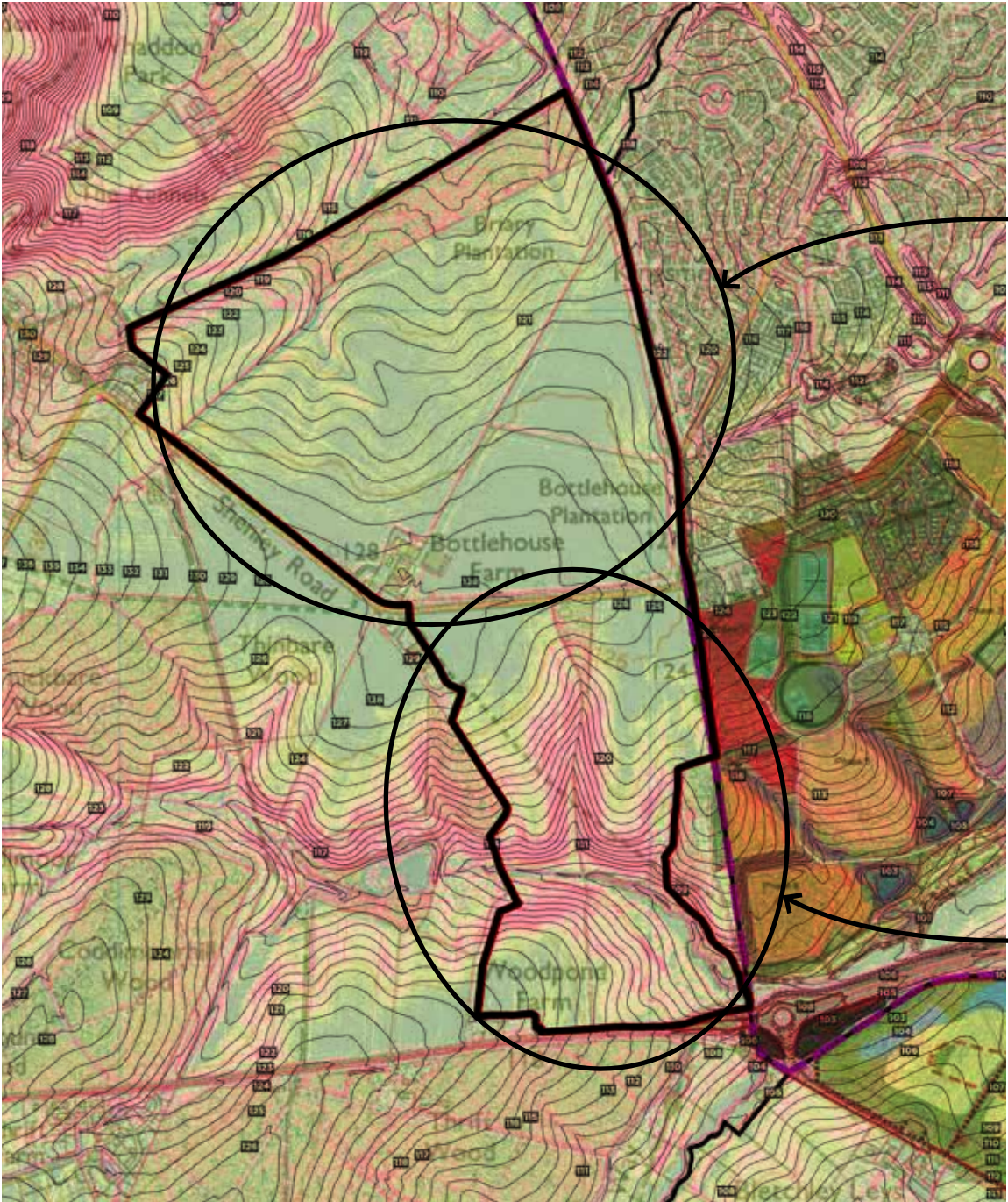
SHENLEY PARK

Annex 2

Development Character - Emerging Thinking

September 2022

RESPONDING TO SITE TOPOGRAPHY



NORTHERN PARCEL

- Generally flat topography sloping gently to the north
- Large, open field pattern
- Trees generally limited to the edges
- Contained views / visual exposure



SOUTHERN PARCEL

- Sloping topography defined by north-south and east-west valley profiles
- High points to the northern edge and south-western corner with low point in the south-eastern corner
- Smaller scale landscape with more tree and hedgerow cover within
- Views generally contained within site though northern part exposed to long distance views to the south

LEARNING FROM LOCAL PRECEDENTS

Observing local precedents of development, access and open space is a useful tool to evolve a site and context-specific design rationale.

Buckinghamshire villages responding to topography with streets following the contours

Quainton



Nash



The centre clustered around / along the High Street and market square located at junction of main streets



Winslow
- located on high point
- landscape extends into centre



Aylesbury
- garden suburb neighbourhoods
- green corridors
- defensible green edge to development



Whaddon



Kingsmead

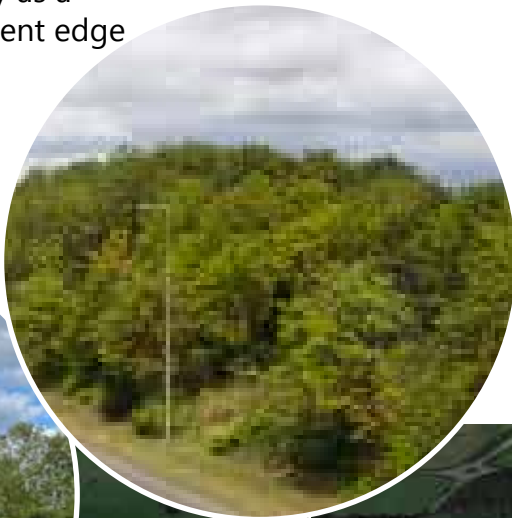


Tattenhoe Park



V1 Snelshall Street

Wooded boundary as a defensible settlement edge



MK Linear Park along the riparian corridor



A421



QUAINTON

Buckinghamshire hillside village



01 - main street following the contour



02 - main street following the contour



03 - central open space traversing down the contours, stepped development fronting open space, views to wider landscape beyond



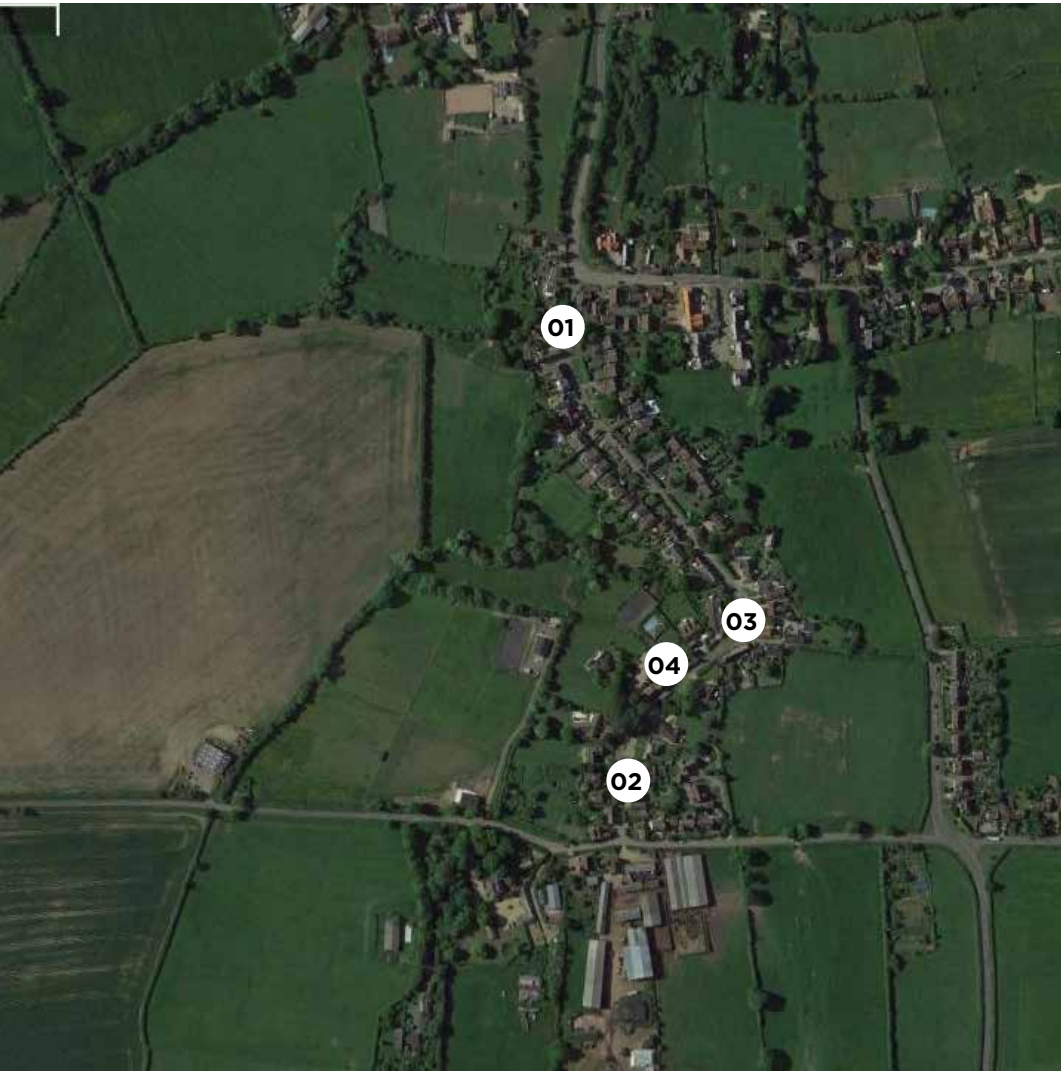
04 - stepped development fronting open space



05 - central open space traversing down the contours, stepped development fronting open space, main street following contours

NASH

Buckinghamshire hillside village



01 - main street following the contour with adjacent development sloping up / down the slope. Level changes accommodated in gardens / driveways



02 - main street following the contour and adjacent properties higher or lower



03 - developing fronting the main street



04 - developing / gardens fronting the main street



Annotated Google earth image illustrating landform and development